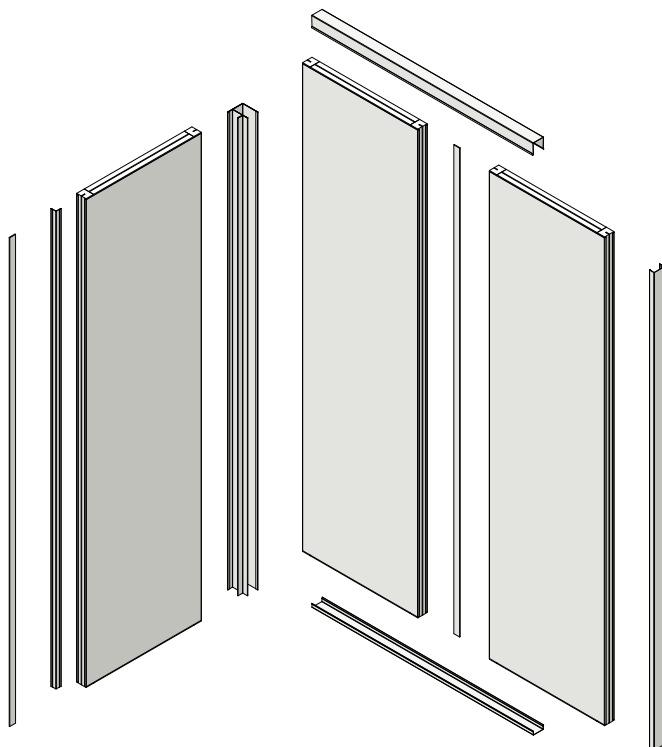


50 mm marine bulkhead

(B15-Rw 32 Db)



Principales qualités. Main qualities

- Très bonne rigidité. *High/top rigidity*
- Découpe du panneau possible. *Possibility to cut panel*
- Possibilité de mélanger les décors. *Decors can be mixed*



Applications



Family : 50 mm

Bulkhead 50T

Type : double skin
 Coating : 2 decorative sides
 Use : lining and partition
 Thickness : 50 mm
 Fire classification : B15
 Noise reduction properties : 32Db
 Junction profile : L50
 Standard length : 2200 mm
 Standard width : 600 mm
 Weight : 21 kg/m²



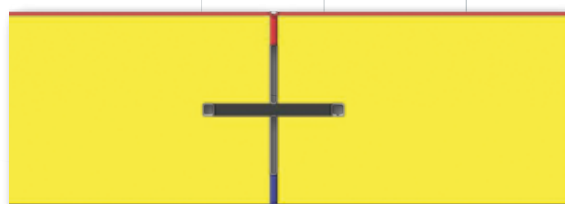
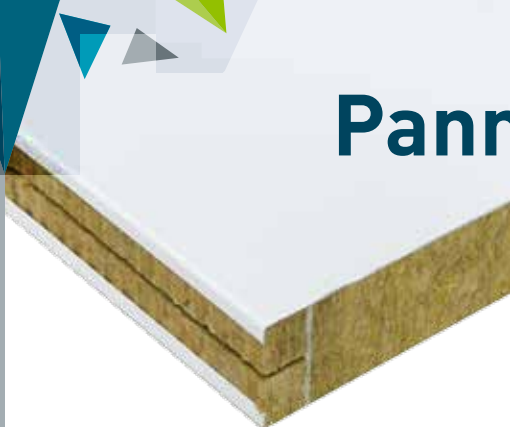
DESIGNER AND MANUFACTURER OF SANDWICH PANELS
 FOR MARITIME AND SPECIAL BUILDING ACTIVITIES APPLICATIONS

Sté MAPAC Panel - 53 rue Marcel Brunelière - 44270 Machecoul - FRANCE - Tél. +33 (0)2 40 78 53 15
 Fax +33 (0)2 40 31 42 16 - mapacpanel@mapac.fr

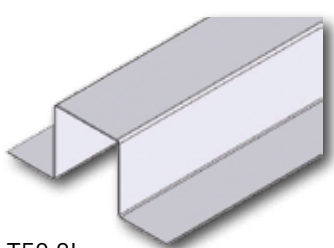
www.mapac.fr

Panneau marine de 50 mm

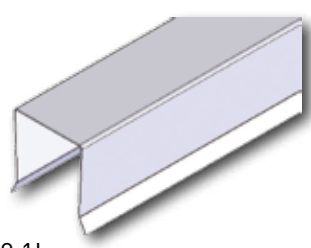
(B15-Rw 32 Db)



Jonction
Junction

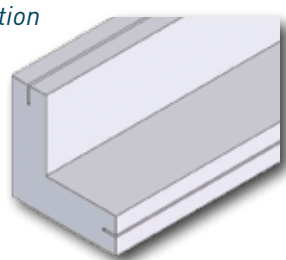


T50 2L

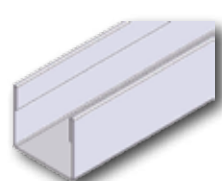


T50 1L

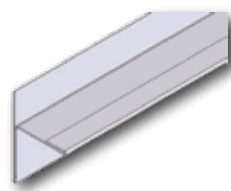
Exemples de profils de tête
Head profile examples



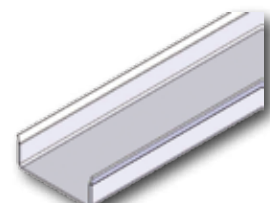
Panneau d'angle
Angle panel



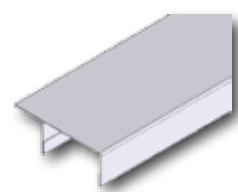
Profil d'extrémité PHU
End profile PHU



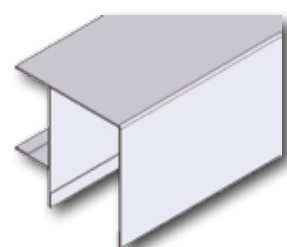
Profil départ Cloison PHC R
Start profile partition PHC R



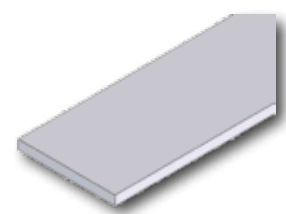
Profil de pied P50
Foot profile P50



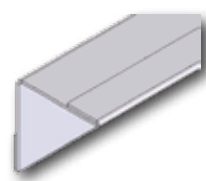
Profil départ cloison
Start profile partition



Profil d'angle T50-50
Angle profile T50-50



Clef d'assemblage 150
Junction profile 150



Profil d'habillage PHC
Covering profile PHC

Famille : 50 mm

Panneau 50T

- Composition : double peau
- Finition : 2 faces décoratives
- Utilisation : .. vaigrage et séparation
- Epaisseur : 50 mm
- Classement feu : B15
- Acoustique Rw labo : 32Db
- Profil de jonction : L50
- Longueur standard 2200 mm
- Largeur standard : 600 mm
- Poids : 21 kg/m²



CONCEPTEUR ET FABRICANT DE PANNEAUX SANDWICH
ADAPTÉS AUX ENVIRONNEMENTS MARITIMES ET TERRESTRES

Sté MAPAC Panel - 53 rue Marcel Brunelière - 44270 Machecoul - FRANCE - Tél. +33 (0)2 40 78 53 15
Fax +33 (0)2 40 31 42 16 - mapacpanel@mapac.fr

www.mapac.fr