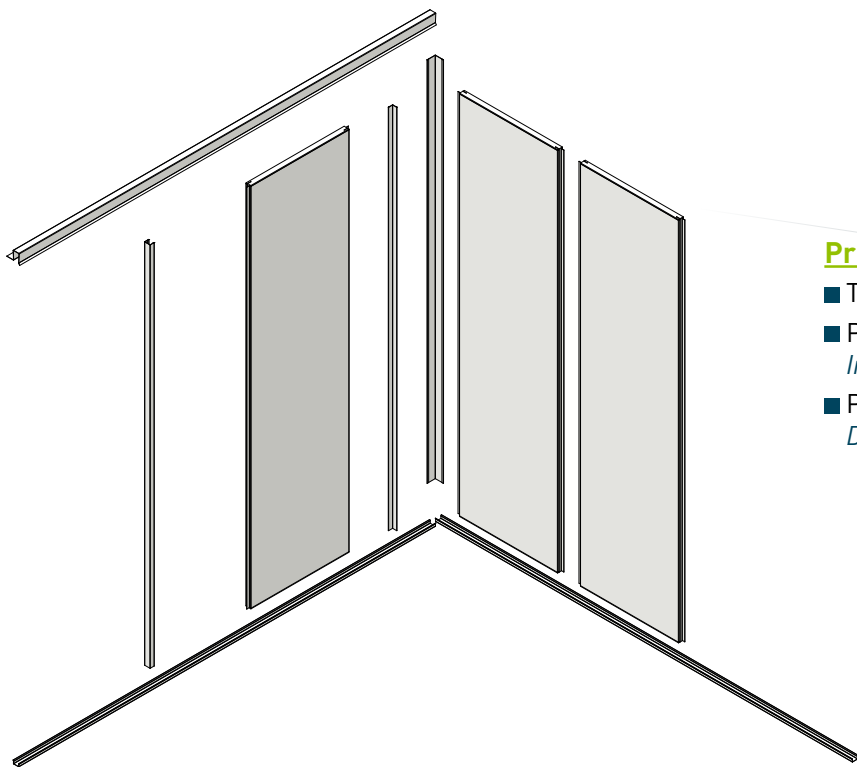


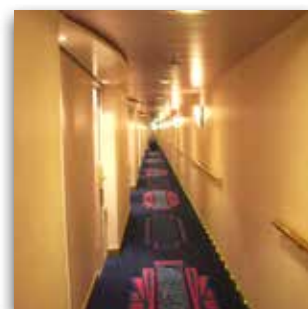
# 30DP marine bulkhead

(B15-Rw 32 Db)



**Principales qualités. Main qualities**

- Très bonne rigidité. *High/top rigidity*
- Profil de jonction intégré. *Integrated junction profile*
- Possibilité de mélanger les décors. *Decors can be mixed*



## Applications



Family : 30 mm

**Bulkhead 30DPDF**

- Type : ..... double skin
- Coating : ..... 2 decorative sides
- Use : ..... lining and partition
- Thickness : ..... 30 mm
- Fire classification : ..... B15
- Noise reduction properties : ... 32Db
- Junction profile : ..... integrated
- Standard length : ..... 2200 mm
- Standard width : ..... 590 mm
- Weight : ..... 17.5 kg/m<sup>2</sup>



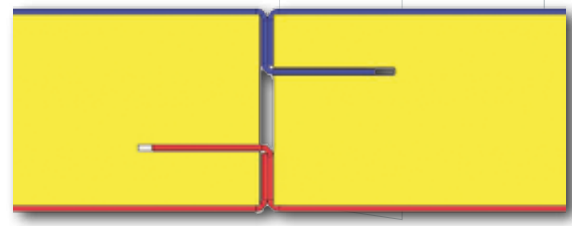
DESIGNER AND MANUFACTURER OF SANDWICH PANELS FOR MARITIME AND SPECIAL BUILDING ACTIVITIES APPLICATIONS

Sté MAPAC Panel - 53 rue Marcel Brunelière - 44270 Machecoul - FRANCE - Tél. +33 (0)2 40 78 53 15  
 Fax +33 (0)2 40 31 42 16 - mapacpanel@mapac.fr

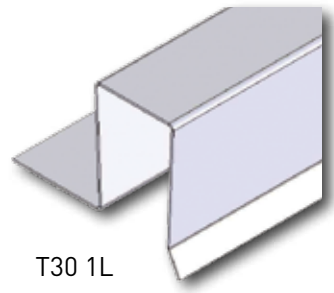
**www.mapac.fr**

# Panneau marine de 30DP

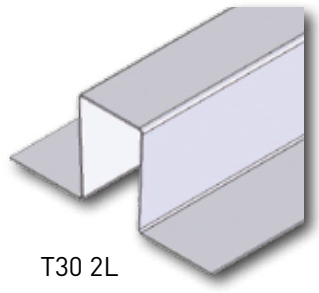
(B15-Rw 32 Db)



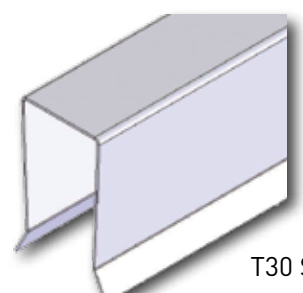
Jonction  
Junction



T30 1L

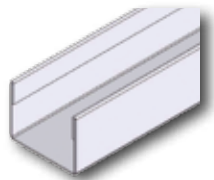


T30 2L

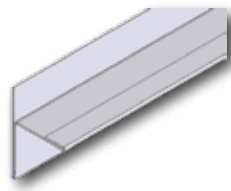


T30 S

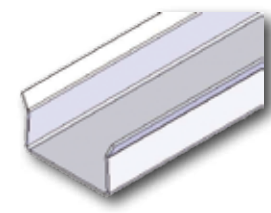
Exemples de profils de tête  
Head profile examples



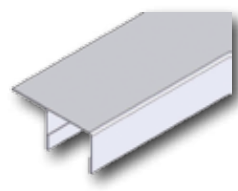
Profil d'extrémité PHU 30  
End profile PHU



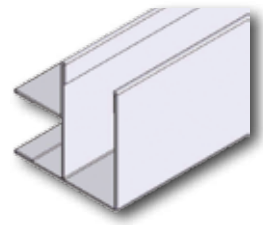
Profil départ Cloison PHC R  
Start profile partition PHC R



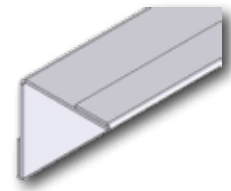
Profil de pied P30  
Foot profile P30



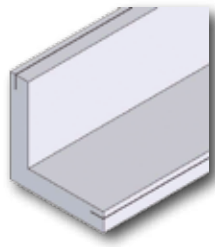
Profil départ cloison 30  
Start profile partition



Profil d'angle T30-30  
Angle profile T30-30



Profil d'habillage PHC 30  
Covering profile PHC



Panneau d'angle  
Angle panel

## Famille : 30 mm

### Panneau 30DPDF

- Composition : . . . . . double peau
- Finition : . . . . . 2 faces décoratives
- Utilisation : . . vaigrage et séparation
- Épaisseur : . . . . . 30 mm
- Classement feu : . . . . . B15
- Acoustique Rw labo : . . . . . 32Db
- Profil de jonction : . Par emboîtement
- Standard length : . . . . . 2200 mm
- Largeur standard : . . . . . 590 mm
- Poids : . . . . . 17.5 kg/m<sup>2</sup>



**MAPAC**

CONCEPTEUR ET FABRICANT DE PANNEAUX SANDWICH  
ADAPTÉS AUX ENVIRONNEMENTS MARITIMES ET TERRESTRES

Sté MAPAC Panel - 53 rue Marcel Brunelière - 44270 Machecoul - FRANCE - Tél. +33 (0)2 40 78 53 15  
Fax +33 (0)2 40 31 42 16 - mapacpanel@mapac.fr

[www.mapac.fr](http://www.mapac.fr)