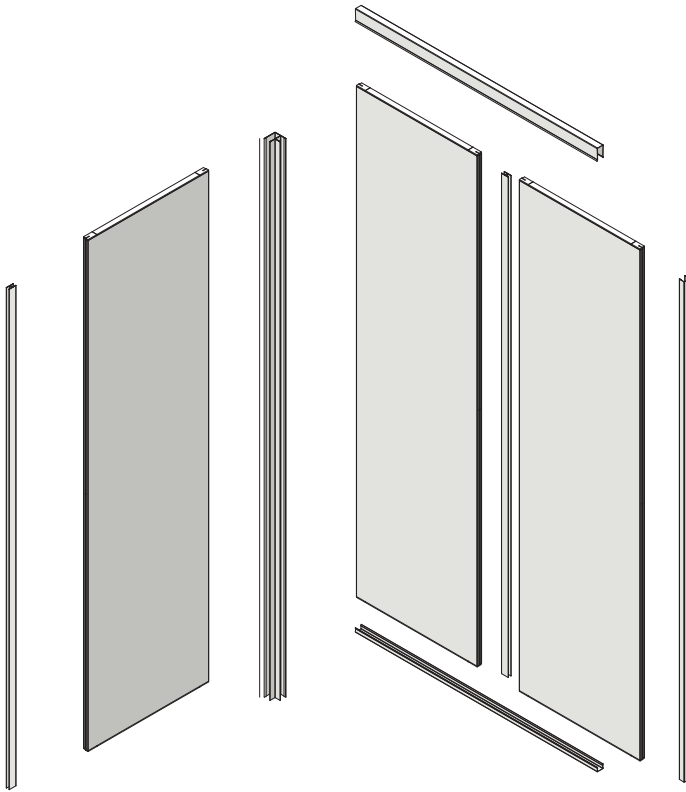


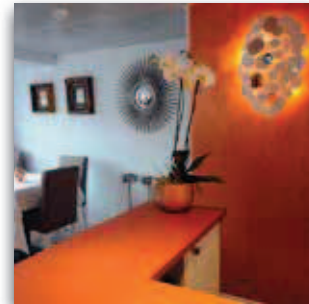
# 25T ECO marine bulkhead

(B15-Rw 29 Db)



### Principales qualités. *Main qualities*

- Forte rigidité. *High rigidity*
- Facilité d'assemblage. *Easy to assemble*
- Qualité de finition. *Top quality finish*
- Découpe possible du panneau. *Possibility to cut panel*



## Applications



Family : 25 mm

### Bulkhead 25T ECO

Type : ..... double skin  
 Coating : ..... 1 decorative side  
 Use : .. lining and prefabricated units  
 Thickness : ..... 25 mm  
 Fire classification : ..... B15  
 Noise reduction properties : ... 29Db  
 Junction profile : ..... H25  
 Standard length : ..... 2200 mm  
 Standard width : ..... 600 mm  
 Weight : ..... 13,5 kg/m<sup>2</sup>



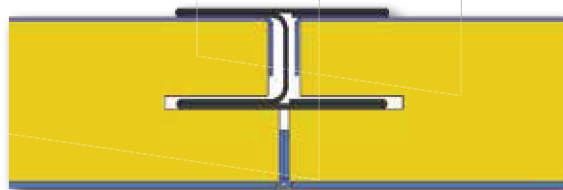
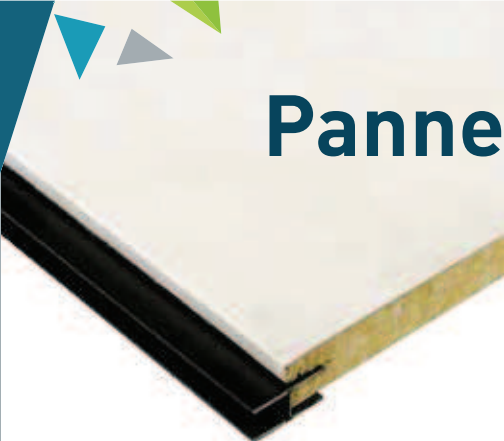
DESIGNER AND MANUFACTURER OF SANDWICH PANELS  
 FOR MARITIME AND SPECIAL BUILDING ACTIVITIES APPLICATIONS

Sté MAPAC Panel - 53 rue Marcel Brunelière - 44270 Machecoul - FRANCE - Tél. +33 (0)2 40 78 53 15  
 Fax +33 (0)2 40 31 42 16 - mapacpanel@mapac.fr

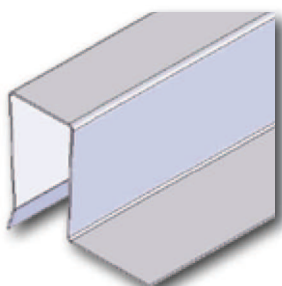
[www.mapac.fr](http://www.mapac.fr)

# Panneau marine de 25T ECO

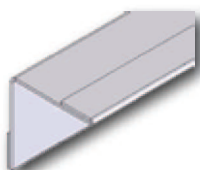
(B15-Rw 29 Db)



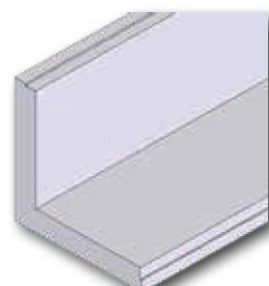
Jonction  
Junction



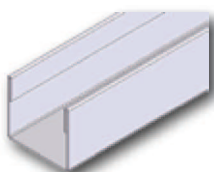
Profil de tête T25 1L  
T25 2L  
Head profile T25



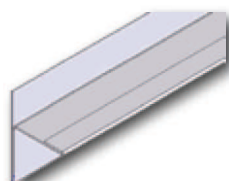
Profil d'habillage PHC 25  
90° ou 270°  
Covering profile PHC



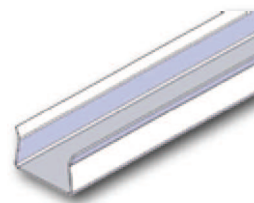
Panneau d'angle  
Angle panel



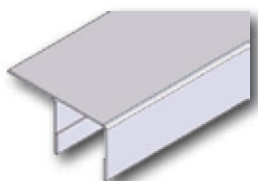
Profil d'extrémité PHU 25  
End profile PHU



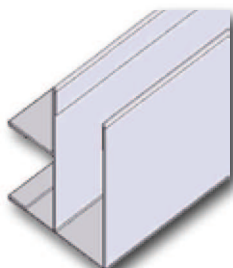
Profil départ Cloison PHC R 25  
Start profile partition PHC R



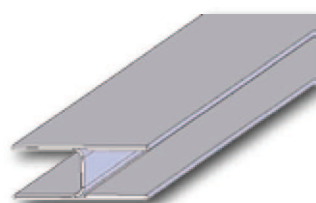
Profil de pied P25  
Foot profile P25



Profil départ cloison 25UC  
Start profile partition



Profil d'angle T25-25  
Angle profile T25-25



Clef d'assemblage H25  
Junction profile H25

Famille : 25 mm

## Panneau 25T ECO

Composition : ..... double peau  
Finition : ..... 1 face décorative  
Utilisation : .. vaigrage et ensemble préfabriqué  
Epaisseur : ..... 25 mm  
Classement feu : ..... B15  
Acoustique Rw labo : ..... 29Db  
Profil de jonction : ..... H25  
Longueur standard : ..... 2200 mm  
Largeur standard : ..... 600 mm  
Poids : ..... 13.5 kg/m<sup>2</sup>



CONCEPTEUR ET FABRICANT DE PANNEAUX SANDWICH  
ADAPTÉS AUX ENVIRONNEMENTS MARITIMES ET TERRESTRES

Sté MAPAC Panel - 53 rue Marcel Brunelière - 44270 Machecoul - FRANCE - Tél. +33 (0)2 40 78 53 15  
Fax +33 (0)2 40 31 42 16 - mapacpanel@mapac.fr

[www.mapac.fr](http://www.mapac.fr)