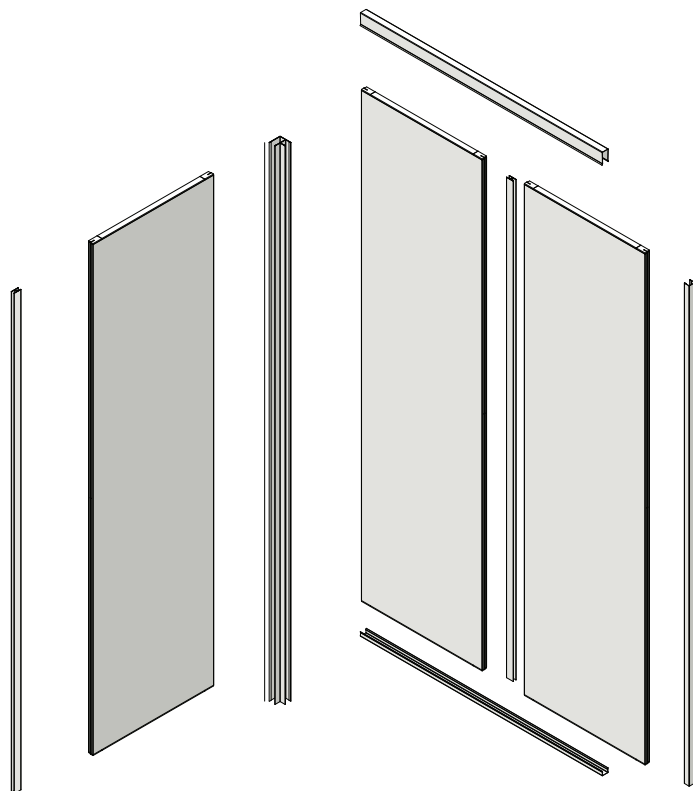


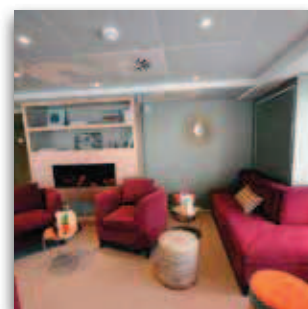
25 mm marine bulkhead

(B15-Rw 33 Db)

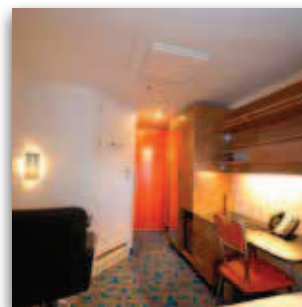


Principales qualités. Main qualities

- Forte rigidité. *High rigidity*
- Facilité d'assemblage. *Easy to assemble*
- Qualité de finition. *Top quality finish*
- Découpe possible du panneau. *Possibility to cut panel*



Applications



Family : 25 mm

Bulkhead 25T

Type : double skin
 Coating : 1 decorative side
 Use : .. lining and prefabricated units
 Thickness : 25 mm
 Fire classification : B15
 Noise reduction properties : ... 33Db
 Junction profile : H25
 Standard length : 2200 mm
 Standard width : 600 mm
 Weight : 16,5 kg/m²



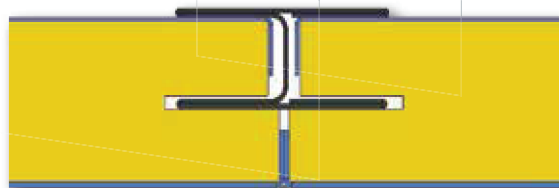
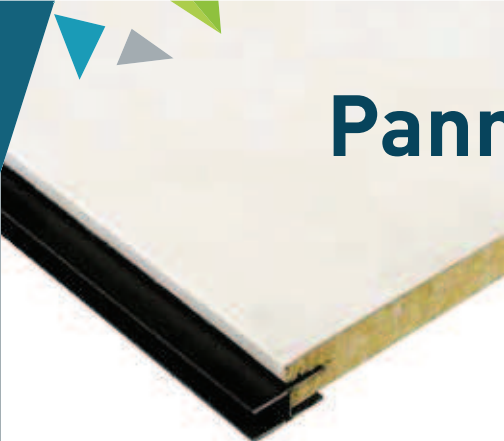
DESIGNER AND MANUFACTURER OF SANDWICH PANELS
 FOR MARITIME AND SPECIAL BUILDING ACTIVITIES APPLICATIONS

Sté MAPAC Panel - 53 rue Marcel Brunelière - 44270 Machecoul - FRANCE - Tél. +33 (0)2 40 78 53 15
 Fax +33 (0)2 40 31 42 16 - mapacpanel@mapac.fr

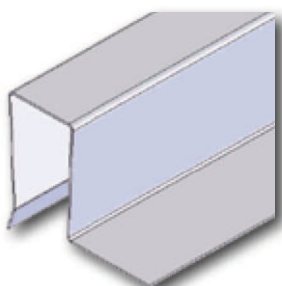
www.mapac.fr

Panneau marine de 25 mm

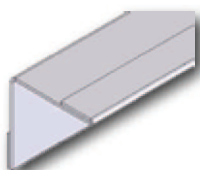
(B15-Rw 33 Db)



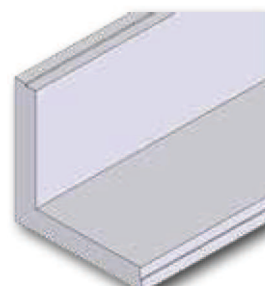
Jonction
Junction



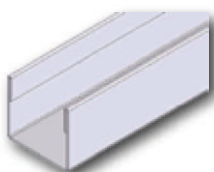
Profil de tête T25 1L
(sans ailes, 2 ailes)
Head profile T25



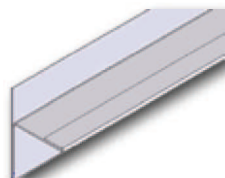
Profil d'habillage PHC 25
90° ou 270°
Covering profile PHC



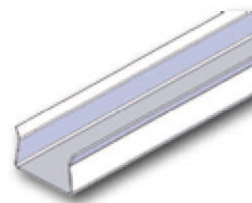
Panneau d'angle
Angle panel



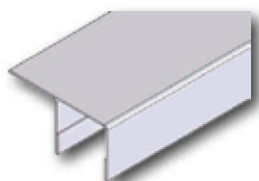
Profil d'extrémité PHU 25
End profile PHU



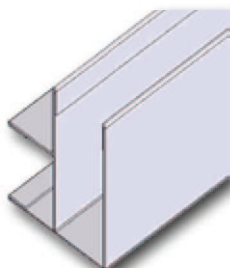
Profil départ Cloison PHC R 25
Start profile partition PHC R



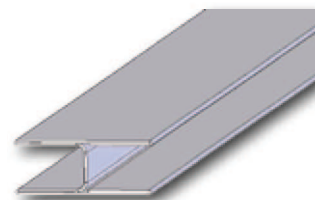
Profil de pied P25
Foot profile P25



Profil départ cloison 25UC
Start profile partition



Profil d'angle T25-25
Angle profile T25-25



Clef d'assemblage H25
Junction profile H25

Famille : 25 mm

Panneau 25T

Composition : double peau
 Finition : 1 face décorative
 Utilisation : .. vaigrage et ensemble
 préfabriqué
 Epaisseur : 25 mm
 Classement feu : B15
 Acoustique Rw labo : 33Db
 Profil de jonction : H25
 Longueur standard : 2200 mm
 Largeur standard : 600 mm
 Poids : 16.5 kg/m²



MAPAC

CONCEPTEUR ET FABRICANT DE PANNEAUX SANDWICH
 ADAPTÉS AUX ENVIRONNEMENTS MARITIMES ET TERRESTRES

Sté MAPAC Panel - 53 rue Marcel Brunelière - 44270 Machecoul - FRANCE - Tél. +33 (0)2 40 78 53 15
 Fax +33 (0)2 40 31 42 16 - mapacpanel@mapac.fr

www.mapac.fr