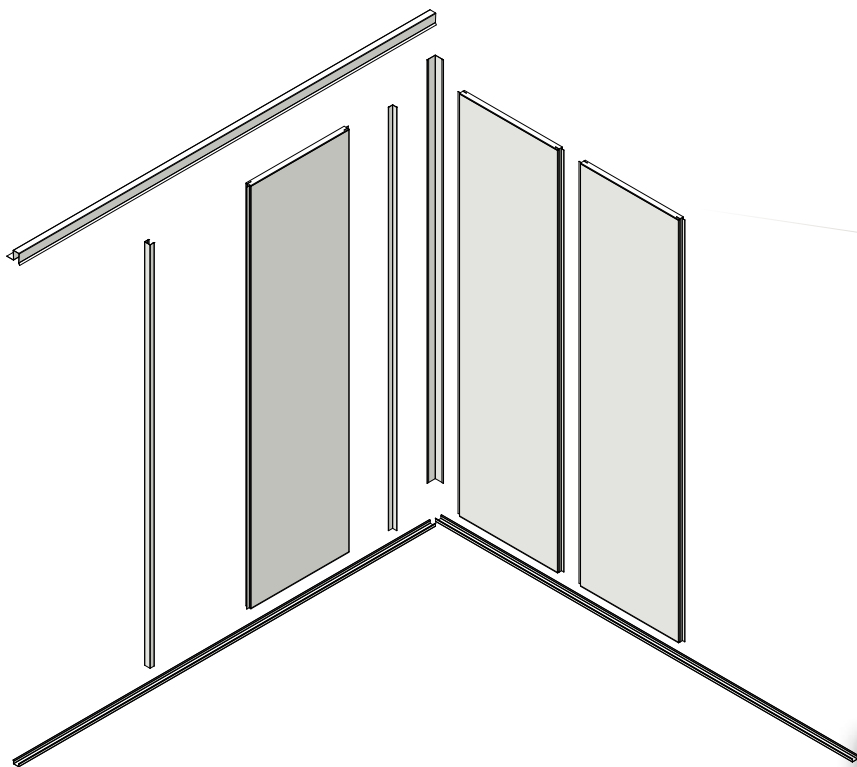


# 30DP marine bulkhead

(B15-Rw 32 Db)



**Principales qualités. Main qualities**

- Très bonne rigidité. *High/top rigidity*
- Profil de jonction intégré. *Integrated junction profile*
- Possibilité de mélanger les décors. *Decors can be mixed*

## Applications



## Family : 30 mm

### Bulkhead 30DPDF

- Type : ..... double skin
- Coating : ..... 2 decorative sides
- Use : ..... lining and partition
- Thickness : ..... 30 mm
- Fire classification : ..... B15
- Noise reduction properties : 32Db
- Junction profile : ..... integrated
- Standard length : ..... 2200 mm
- Standard width : ..... 590 mm
- Weight : ..... 17.5 kg/m<sup>2</sup>



**MAPAC**

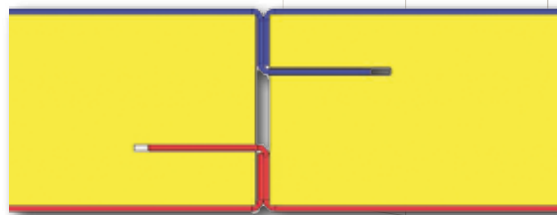
DESIGNER AND MANUFACTURER OF SANDWICH PANELS  
FOR MARITIME AND SPECIAL BUILDING ACTIVITIES APPLICATIONS

MAPAC Panel - ZI La Seiglerie - 44270 Machecoul - FRANCE - Tél. +33 (0)2 40 78 53 15  
Fax +33 (0)2 40 31 42 16 - mapacpanel@mapac.fr

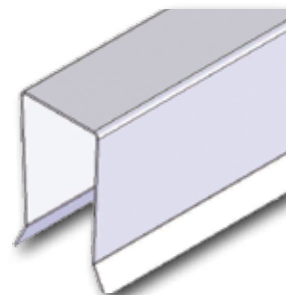
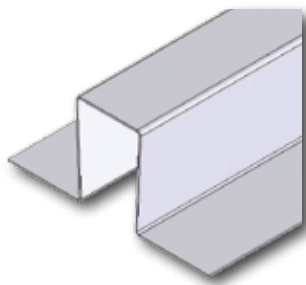
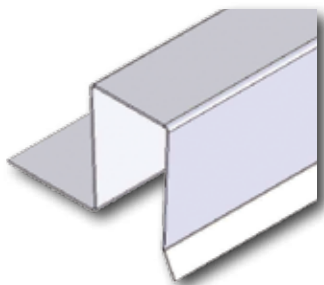
**www.mapac.fr**

# Panneau marine de 30DP

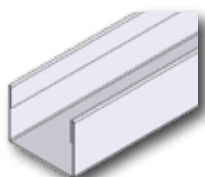
(B15-Rw 32 Db)



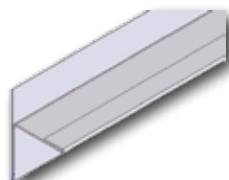
Jonction  
Junction



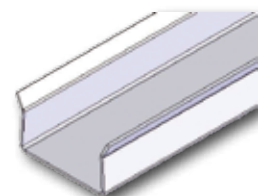
Exemples de profils de tête  
Head profile examples



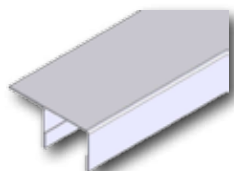
Profil d'extrémité PHU  
End profile PHU



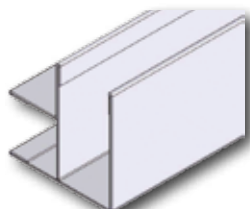
Profil départ Cloison PHC R  
Start profile partition PHC R



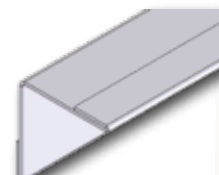
Profil de pied P30  
Foot profile P30



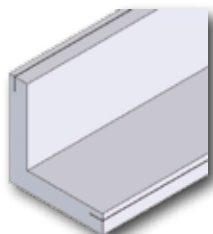
Profil départ cloison  
Start profile partition



Profil d'angle T 30-30  
Angle profile T30-30



Profil d'habillage PHC  
Covering profile PHC



Panneau d'angle  
Angle panel

Famille : 30 mm

## Panneau 30DPDF

Composition : .....double peau  
 Finition : .....2 faces décoratives  
 Utilisation : .....vaigrage et séparation  
 Epaisseur : .....30 mm  
 Classement feu : ....B15  
 Acoustique Rw labo : 32Db  
 Profil de jonction : ..Par emboîtement  
 Standard length : ...2200 mm  
 Largeur standard : ..590 mm  
 Poids : .....17.5 kg/m<sup>2</sup>



**MAPAC**

CONCEPTEUR ET FABRICANT DE PANNEAUX SANDWICH  
 ADAPTÉS AUX ENVIRONNEMENTS MARITIMES ET TERRESTRES

S<sup>té</sup> MAPAC Panel - ZI La Seiglerie - 44270 Machecoul - FRANCE - Tél. +33 (0)2 40 78 53 15

Fax +33 (0)2 40 31 42 16 - mapacpanel@mapac.fr

**www.mapac.fr**